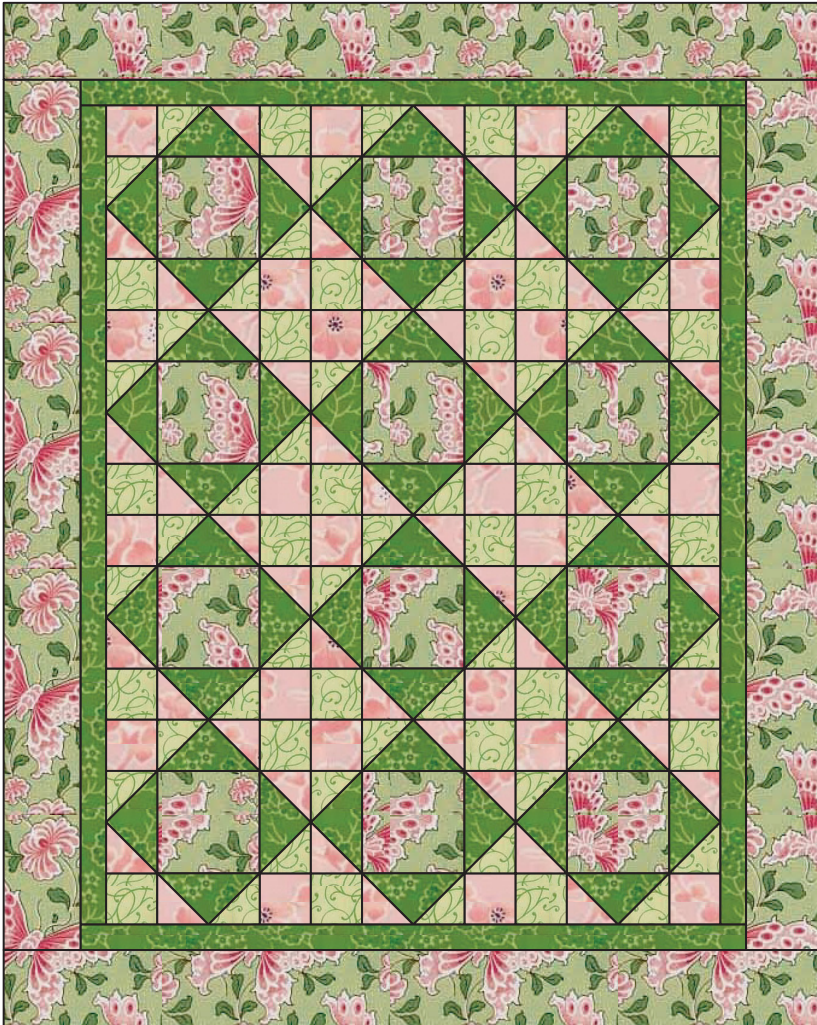


King's Crown

Quilt size: 64" x 80" • Block size: 16"



Choose your favorite large print fabric for the block centers and the outer border. Add three fabrics to complement the first, and you have a quilt fit for a king!

Materials

Yardage is based on 42"-wide fabric.

3 $\frac{1}{8}$ yards of large print for blocks, outer border, and binding

1 $\frac{2}{3}$ yards of dark green print for blocks and inner border

1 yard of light green print for blocks

1 yard of pink print for blocks

5 yards of fabric for backing

Double size batting

Cutting

From the dark green print, cut:

- 3 strips, 9 $\frac{1}{4}$ " x 42"; cut strips into 12 squares, 9 $\frac{1}{4}$ " x 9 $\frac{1}{4}$ ". Cut squares twice diagonally to make 48 quarter-square triangles. ☒
- 6 strips, 2 $\frac{1}{2}$ " x 42"

From the light green print, cut:

- 3 strips, 4 $\frac{7}{8}$ " x 42"; cut strips into 24 squares, 4 $\frac{7}{8}$ " x 4 $\frac{7}{8}$ ". Cut squares once diagonally to make 48 half-square triangles. ☒
- 3 strips, 4 $\frac{1}{2}$ " x 42"; cut strips into 24 squares, 4 $\frac{1}{2}$ " x 4 $\frac{1}{2}$ "

From the pink print, cut:

- 3 strips, 4 $\frac{7}{8}$ " x 42"; cut strips into 24 squares, 4 $\frac{7}{8}$ " x 4 $\frac{7}{8}$ ". Cut squares once diagonally to make 48 half-square triangles. ☒
- 3 strips, 4 $\frac{1}{2}$ " x 42"; cut strips into 24 squares, 4 $\frac{1}{2}$ " x 4 $\frac{1}{2}$ "

From the *lengthwise* grain of the large print, cut:

- 1 strip, 8 $\frac{1}{2}$ " x 70"; cut strip into 8 squares, 8 $\frac{1}{2}$ " x 8 $\frac{1}{2}$ "
- 2 strips, 6 $\frac{1}{2}$ " x 70"
- 2 strips, 6 $\frac{1}{2}$ " x 66"

From the *crosswise* grain of the large print, cut:

- 1 strip, 8 $\frac{1}{2}$ " x 42"; cut strip into 4 squares, 8 $\frac{1}{2}$ " x 8 $\frac{1}{2}$ ". (You will have a total of 12 squares, 8 $\frac{1}{2}$ " x 8 $\frac{1}{2}$ " — 8 from the lengthwise grain and 4 from the crosswise grain.)
- 8 strips, 2 $\frac{1}{2}$ " x 42"



King's Crown block

Making the Blocks

1. Sew a light green $4\frac{7}{8}$ " half-square triangle to the left side of a dark green $9\frac{1}{4}$ " quarter-square triangle as shown. Press toward the light green. Sew a pink $4\frac{7}{8}$ " half-square triangle to the right side of the dark green triangle. Press toward the pink. Make 24.



Make 24.

2. Repeat step 1, flipping the position of the light green and pink triangles so that the light green is on the right and the pink is on the left as shown. Press toward the half-square triangles. Make 24.



Make 24.

3. Arrange a pink $4\frac{1}{2}$ " square and a light green $4\frac{1}{2}$ " square on either side of a unit made in step 1. Be careful to position the pieces as shown. Sew the pieces together and press toward the squares. Make 24.

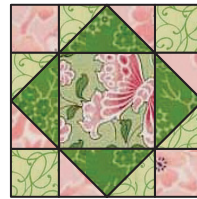


Make 24.

4. Sew a unit made in step 2 on either side of an $8\frac{1}{2}$ " square of the large print. Position the pieces as shown. Press toward the large print. Make 12.



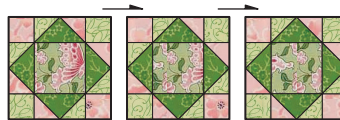
5. Sew two of the units from step 3 to the top and the bottom of a unit from step 4. Press. Make 12 blocks.



Make 12.

Assembling the Quilt

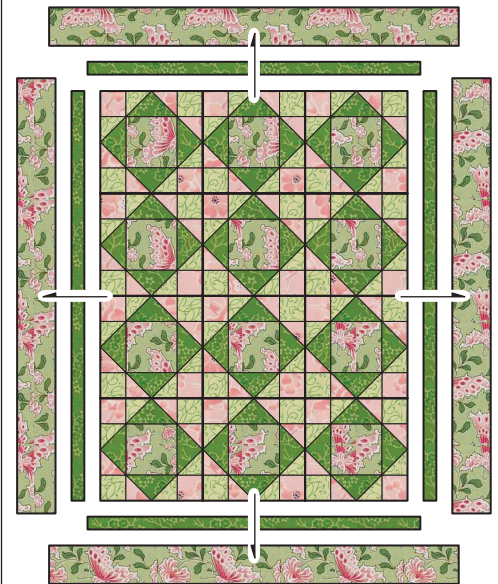
1. Arrange the blocks in four rows with three blocks in each row. Sew the blocks into rows. Press the rows in opposite directions. Sew the rows together. Press.



2. Sew the dark green $2\frac{1}{2}$ "-wide strips together end to end to make one long strip for the inner border.
3. Measure the quilt vertically through the center. It should be about $64\frac{1}{2}$ " long. From the strip made in step 2, cut two borders to this measurement. Sew the borders to the left and to the right sides of the quilt top, matching the ends and the

centers. Press toward the borders.

4. Measure the quilt horizontally through the center, including the borders just added. It should measure about $52\frac{1}{2}$ ". From the strip made in step 2, cut two borders to this measurement. Sew the borders to the top and to the bottom of the quilt, matching the ends and the centers. Press toward the borders.
5. Repeat steps 3 and 4 using the $6\frac{1}{2}$ " x 70" strip of large print for the side borders and the $6\frac{1}{2}$ " x 66" strip of large print for the top and bottom borders.



Finishing the Quilt

1. Measure the length and width of your quilt top. Add 6" to the length and to the width and prepare a backing to that measurement.
2. Layer the backing, batting, and quilt top. Pin, hand baste, or spray baste the layers together.
3. Quilt using your preferred method. Trim excess batting and backing even with the edges of the quilt top.
4. Sew the $2\frac{1}{2}$ "-wide large print strips together end to end to make one long strip for the binding. Fold the strip lengthwise, wrong sides together, and press. Align the raw edges of the binding strip with the outside edge of the quilt top, and stitch. Fold the binding over the raw edges to the back of the quilt, covering the machine stitching. Hand sew the binding to the back of the quilt.