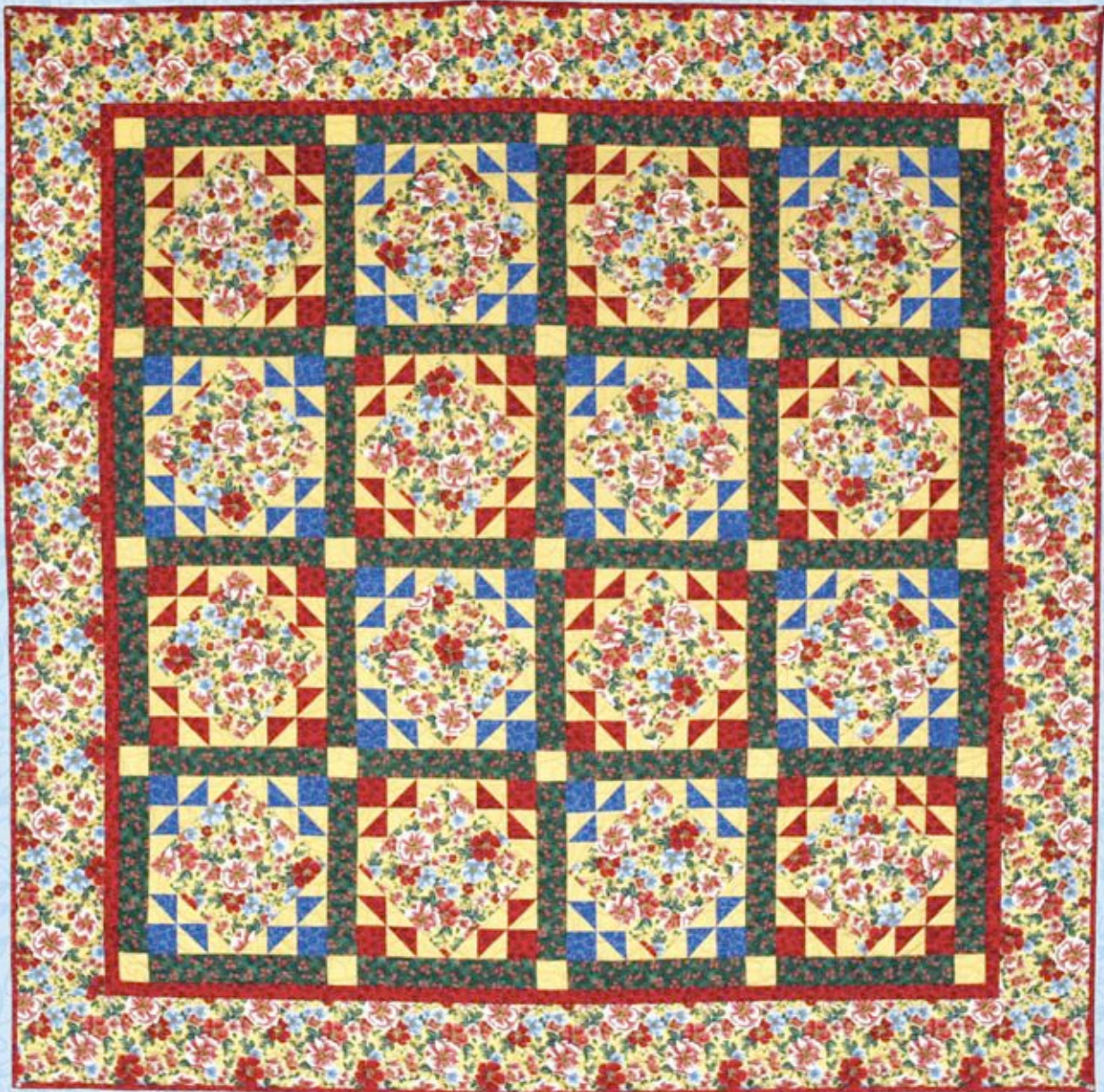


# *Raychel's Garden*

72" X 72"  
by Debby Kratovil



**SEATTLE  
BAY**

A Division of Kona Bay Fabrics

1637 Kahai Street  
Honolulu, Hawaii 96819  
(800) 531-7913

Free pattern available at [www.konabay.com](http://www.konabay.com)

**Raychel's Garden** by Seattle Bay



RAYC-01 / beige



RAYC-01 / ebony



RAYC-01 / goldenrod



RAYC-02 / black



RAYC-02 / blue



RAYC-02 / green



RAYC-02 / red



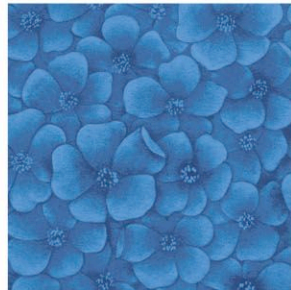
RAYC-03 / buttercup



RAYC-03 / hunter



RAYC-03 / yellow



RAYC-04 / blue



RAYC-04 / red



RAYC-04 / yellow



RAYC-05 / leaf



RAYC-05 / yellow

## Raychel's Garden

Quilt designed and sewn by Debby Kratovil for Kona Bay Fabrics; quilted by Cathy MacDonald

Quilt size: 72 x 72 inches

Block size: 12 inches

### Fabric Requirements

Fabric A:	2-1/2 yds.	RAYC-01 (multicolored floral print)
Fabric B:	1-1/2 yds.	RAYC-05 (light yellow)
Fabric C:	1-1/4 yds.	RAYC-04 (red)
Fabric D:	3/4 yds.	RAYC-04 (blue)
Fabric E:	1-1/4 yds.	RAYC-03 (green)

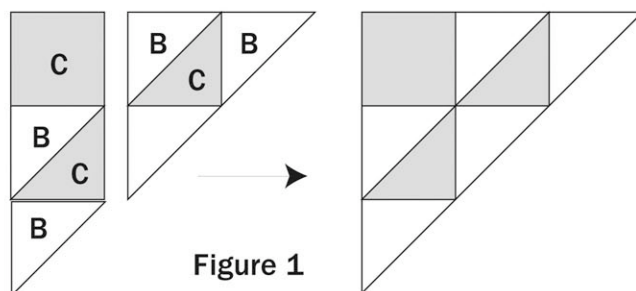
### Cutting Directions:

Fabric A:	Cut borders FIRST along the length of the fabric. Cut (2) 6" x 63" (will be trimmed to size later) and (2) 6" x 74". Cut (16) 9" squares
Fabric B:	Cut (160) 2-7/8" squares, cut in half on diagonal (for blocks) Cut (25) 2-1/2" squares (for sashing)
Fabric C:	Cut (32) 2-1/2" squares. Cut (32) 2-7/8" squares, cut in half on diagonal Cut (8) 1-1/2" x w of strips (inner border)
Fabric D:	Cut (32) 2-1/2" squares. Cut (32) 2-7/8" squares, cut in half on diagonal
Fabric E:	Cut (40) 2-1/2" x 12-1/2" strips
Backing:	RAYC-03, Buttercup, 4-1/2 yds. Cut and piece to fit quilt top, with 4" overlap on all four sides
Binding:	Fabric A: Cut (8) 2-1/4" strips length of fabric, pieced together.

### Block Assembly

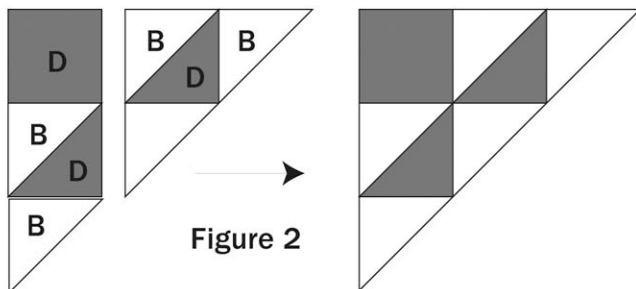
#### Red Blocks - Corner Units

1. Sew one Fabric B triangle to one Fabric C triangle, making a half-square triangle unit. Make eight of these for EACH RED block.
2. Sew a 2-1/2" Fabric C square with one half-square triangle unit. Sew one half-square unit with three Fabric B triangles. Join these to form a Corner Unit. Make four for each block; a total of thirty-two for the Red Blocks.



#### Blue Blocks - Corner Units

3. Sew one Fabric B triangle to one Fabric D triangle, making a half-square triangle unit. Make eight of these for EACH BLUE block.
4. Sew a 2-1/2" Fabric D square with one half-square triangle unit. Sew one half-square unit with three Fabric B triangles. Join these to form a Corner Unit.



### Completing the 16 Blocks

5. Sew the sets of four matching corner units with the center Fabric A squares. Make eight Red and eight Blue blocks.

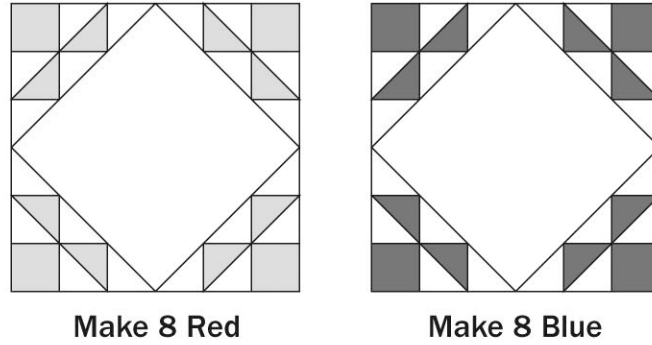


Figure 3

### Sashing Assembly

6. Sew five 2-1/2" Fabric B squares with four 2-1/2" x 12-1/2" Fabric E strips, beginning and ending with the Fabric B squares. Make five of these horizontal units.



Figure 4

### Row Assembly

7. Alternate two Red and two Blue blocks with Fabric E sashing strips, beginning and ending with the sashing strips. Make two rows with a Red block at the left and two rows with a Blue block at the left.

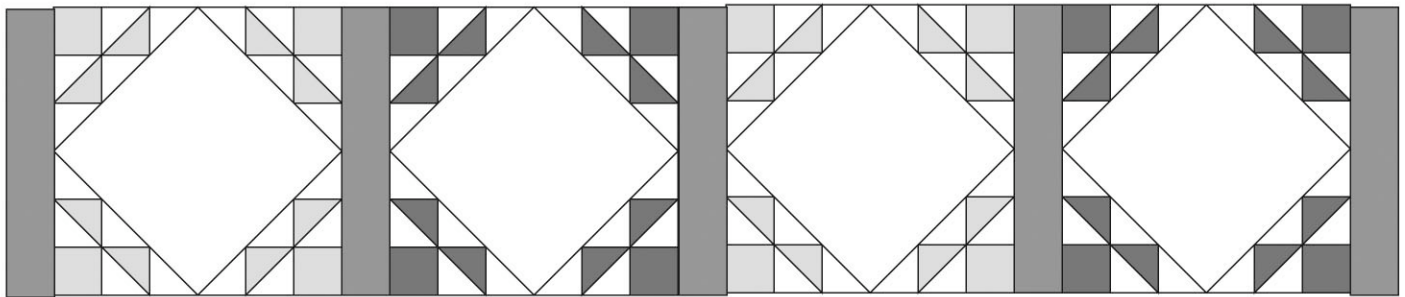


Figure 5

### Quilt Top Assembly

8. Sew the sashing rows with the block rows as shown.

9. For inner borders, sew together two Fabric C 2-1/2" strips, four times. Attach to quilt sides; trim and press. Attach remaining two strips to quilt top and bottom; trim and press.

10. Attach outer borders by sewing two 6" x 63" Fabric A strips to left and right sides of quilt top. Trim to size. Sew two 6" x 74" strips of Fabric A strips to top and bottom of quilt top.

11. Layer, quilt and bind as desired.