

# Chantal



Black

Quilts designed by  
Debby Kratovil for  
Blank Quilting  
Finished Size is 57" x 57"

Mauve

Aqua



TM

# Chantal

Quilt designed by Debby Kratovil for Blank Quilting

Approximate Finished Size:

57" x 57"

Block Size: 7 1/2"

All seam allowances are 1/4". Please read all directions before beginning and press carefully after each step.

## Fabric Requirements:

### Black Version

**Fabric A:** 1-5/8 yds of BTR-5007 Black  
**Fabric B:** 1 yd of BTR-5011 Lilac  
**Fabric C:** 1/3 yd of BTR-5010 Lilac  
**Fabric D:** 1/3 yd of BTR-5008 Moss  
**Fabric E:** 1/4 yd of BTR-5009 Ruby  
**Fabric F:** 1/4 yd of BTR-M3708 Pansy  
**Fabric G:** 5/8 yd of BTR-M4875 Shell  
**Fabric H:** 1/3 yd BTR-5012 Gold

### Mauve Version

**Fabric A:** 1-5/8 yds of BTR-5007 Mauve  
**Fabric B:** 1 yd of BTR-5011 Mauve  
**Fabric C:** 1/3 yd of BTR-5010 Mauve  
**Fabric D:** 1/3 yd of BTR-5008 Wheat  
**Fabric E:** 1/4 yd of BTR-5009 Blossom  
**Fabric F:** 1/4 yd of BTR-5009 Yellow  
**Fabric G:** 5/8 yd of BTR-M3708 Coral  
**Fabric H:** 1/3 yd BTR-5012 Pink

### Aqua Version

**Fabric A:** 1-5/8 yds of BTR-5007 Aqua  
**Fabric B:** 1 yd of BTR-5011 Aqua  
**Fabric C:** 1/3 yd of BTR-5010 Aqua  
**Fabric D:** 1/3 yd of BTR-5008 Leaf  
**Fabric E:** 1/4 yd of BTR-5009 Yellow  
**Fabric F:** 1/4 yd of BTR-M3708 Coral  
**Fabric G:** 5/8 yd of BTR-M3708 Lapis  
**Fabric H:** 1/3 yd BTR-5012 Yellow

## Cutting Directions:

**Fabric A:** Cut two 6" x 47" and two 6" x 59" for borders; cut five 8" squares for blocks

**Fabric B:** Cut six 3" x 42" strips (Rail Fence blocks); cut enough 2-1/4" strips on bias to equal 245"

**Fabric C:** Cut three 3" x 42" strips (Rail Fence blocks)

**Fabric D:** Cut two 4-1/4" x 42" strips (Four Patch blocks)

**Fabric E:** Cut one 4-1/4" x 42" strip (Four Patch blocks)

**Fabric F:** Cut one 4-1/4" x 42" strip (Four Patch blocks)

**Fabric G:** Cut three 12-5/8" squares and two 6-5/8" squares (setting triangles)

**Fabric H:** Cut five 2" x 42" strips (inner border)

## Block Assembly:

1. Sew two 3" Fabric B strips with one 3" Fabric C strip. Make (3) of these strip sets. Re-cut into (12) 7-1/2" squares. These are the Rail Fence blocks (Diagram 1).
2. Cut the two Fabric D strips into sixteen 4-1/4" squares. Cut each Fabric E and Fabric F strips into eight 4-1/4" squares each. Make four 4 Patch blocks using the Fabric D and Fabric E squares; make four 4 Patch blocks using the Fabric D and Fabric F squares (Diagram 2).
3. Cut the three 12-5/8" Fabric G squares into four triangles each (Diagram 3). These are the side setting triangles.
4. Cut the two 6-5/8" Fabric G squares into two triangles each (Diagram 4). These are the corner setting triangles.

## Quilt Top Assembly:

5. Refer to the Assembly Diagram and join the blocks, the Fabric A 8" squares and the Fabric G side and corner setting triangles into diagonal rows. Sew the rows into the quilt center.

## Borders:

6. Piece together the 2" Fabric H strips for the inner border. Measure quilt sides and sew to quilt center. Trim and press.
7. Measure and trim the two 6" x 47" border strips (Fabric A) to the quilt center size and sew to quilt sides. Measure and trim the two 6" x 59" border strips for the remaining two sides and one to quilt top and one to bottom.
8. Layer and quilt as desired.
9. Piece together the 2-1/4" Fabric B bias strips and use for binding.

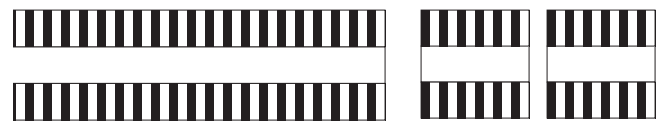


Diagram 1 – Rail Fence Blocks



Diagram 2 –  
4 Patch Blocks

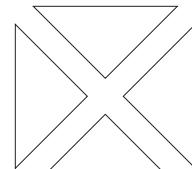


Diagram 3

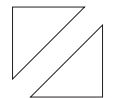
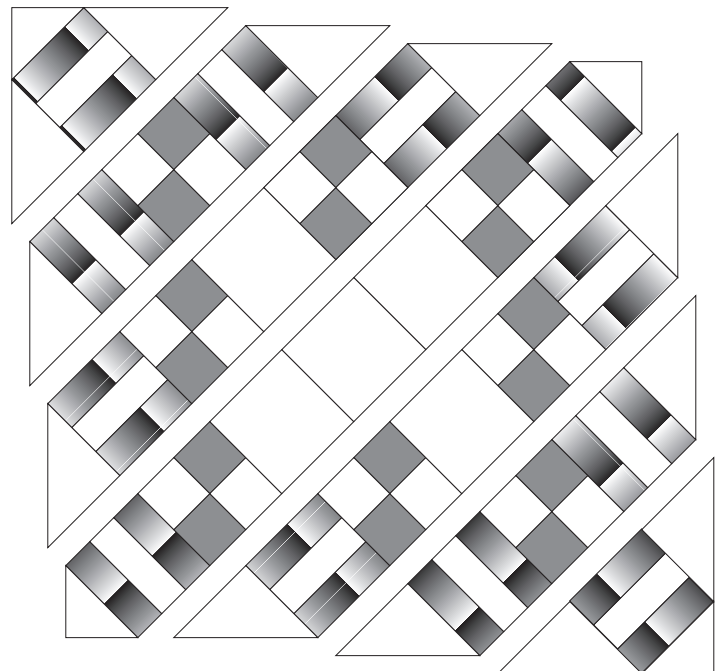


Diagram 4



Chantal Assembly

While all possible care has been taken to ensure the accuracy of this pattern, we are not responsible for printing errors or the way in which individual work varies.



© 2007 Blank Quilting • All rights reserved  
65 West 36th St., New York, NY 10018 • Toll Free: 1-888-442-5265 • Fax: 1-212-563-4733 • www.BlankQuilting.com